

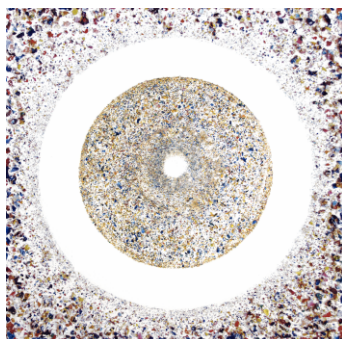


GLOBAL EMPATHY ACCELERATOR

Human Connection Institute

**PARTNERSHIP
PROPOSAL**

Red sky at dawn, sailor take warning
Red sky at night, sailor's delight

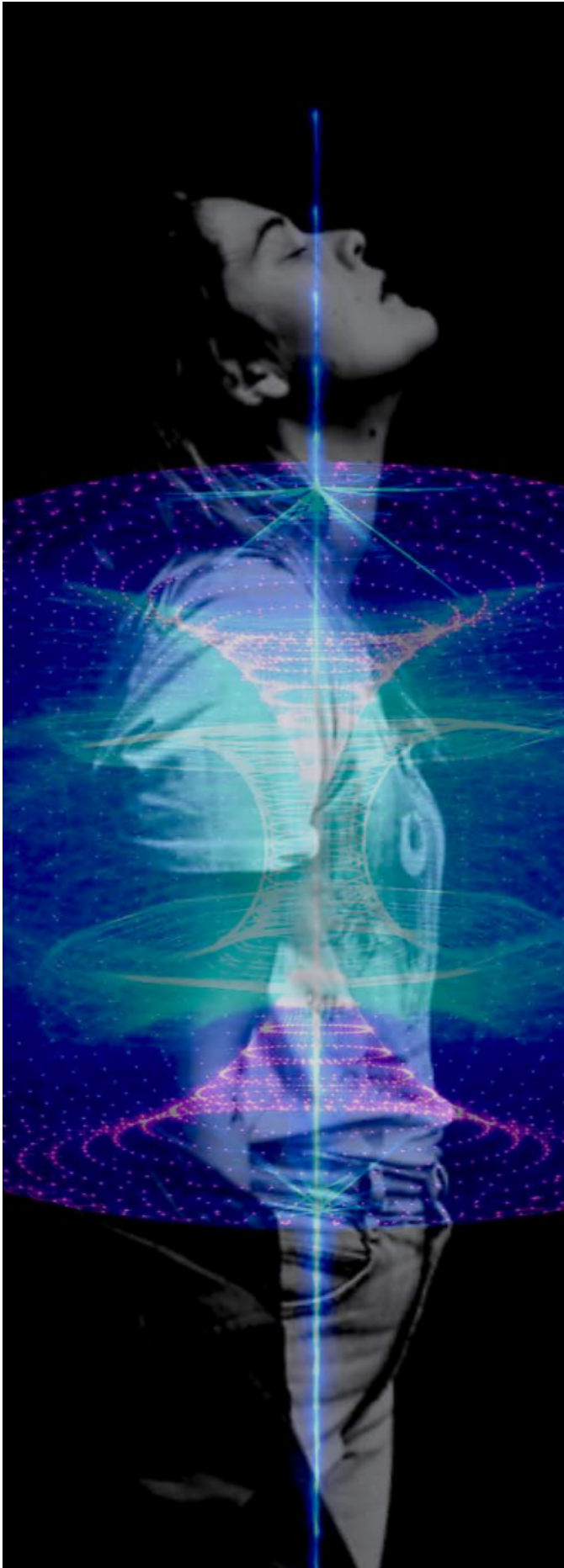


HUMAN CONNECTION INSTITUTE
Sperry Andrews, founder/codirector
Honolulu, Hawaii - 505-629-0700

Mission Statement

HCI is an internationally-based institute exploring how every man, woman, and child is linked by our innate capacity for being collectively conscious. We have found that how we pay attention to ourselves, to one another, and to nature determines the quality of our relationships in concrete tangible ways. Our research spans all the branches of science, exploring inter-subjectively as well as objectively why we have avoided sharing a common sense. We are able to unlearn this habit. Our interconnectedness can be felt and thought intuitively by every human being. Forty years of trial and error research with hundreds of multicultural groups has shown us how to live in harmony. Originality and authenticity for creative development in families, relationships, and communities can be strengthened. Problem solving in politics, as well as optimum performance in sports and any type of collaborative activity from surgical teams to symphony orchestras is greatly enhanced. Rapid decision making in business allows organizations to by-pass hours of meeting time. As billions of us learn to pay attention together, this promises to eliminate poverty, pollution, disease, crime and war. To survive and thrive, an Empathic Civilization is a necessity!

Sperry's **Bio:**



NoProblem NoReaction SOLUTIONS

Awakeness has no image, yet – like a mirror – it unites, reflects, and transforms our imaginations, causing love and awe; by sharing awakeness, the delusions of separation dissolve, awakening and enlightening our selves and all of humankind.

This simple way of being together has reliably allowed anyone interested to experience a mirror-like 'awakeness' with others inside of ninety minutes. Collaborating on being awake as awareness awakens our minds to the primordial nature of mind, the relative becomes conscious of the absolute.

I have been experientially exploring this way of being with thousands of people internationally in self-selected, multi-cultural groups for free for nearly forty years.

You too, can give it a try for free and you will see: experience gradually establishes a habit that becomes 'our' new normal. This is a true path to a pathless Peace and unconditioned LOVE which is ripe to be shared by ALL.



Our Mission is to Awaken Humanity's Heartfelt Intelligence

“Sperry Andrews’ approach to facilitating collective and mindful group consciousness is vital for bringing together and empowering people in everyday venues, as well as in business settings and corporate cultures. I have experienced first-hand how simple yet powerful Sperry’s approach is, and how it can easily be applied across diverse settings and populations. His process enables insight to spontaneously arise in a spirit of openness and conscious communication that facilitates people moving forward to implement creative solutions to individual and group movements. I wish every person, business, and corporate culture would integrate and implement Sperry’s work into the everyday hum of both workplace culture and personal life. His work encourages interactive, energetic, and authentic communication and creativity to emerge effortlessly.”

***- Richard Miller, PhD. Psychologist,
President of the Integrative Restoration Institute,
author of The iRest Program for Healing PTSD***



Paintings by Sperry Andrews

Interconnected Consciousness

OUR MISSION

Our Empathy Accelerator is an educational initiative intent on successfully igniting humanity's heartfelt intelligence. By engaging the altruistic heart of humanity and heightening widespread empathic sensitivity, we will be strengthening the architecture of human consciousness and awakening our own innate Emotional Intelligence (EI). In year one, we assess innovators' track records and the potential of their proposals: e.g., feature and documentary films, video games, social media apps, technological innovations, scientific research and conferences, public events, talk shows, reality TV, and forms of print media. Winning Projects will be funded for four years.

OUR VISION:

To support solutions that lead to the elimination of poverty, pollution, disease, crime and war by co-creating an empathic civilization on this planet.

THE CRITICAL NEED FOR OUR SOLUTION

A grave lack of mutual understanding about the essential importance of personal and collective consciousness forebodes dire consequences.

Competing forces are moving forward with plans to impose top-down government, while 'this' bottom-up egalitarian solution supports and strengthens all life and all of us.

Elon Musk has echoed many others, suggesting we now have the digital technology to invite every person on earth to vote, allowing for a long-awaited shift to global grass-roots governance to ensure the greatest good for all.

Our Global Empathy Accelerator will play an essential role at this most pivotal of times.



The Human Connection Institute (HCI)

For thirty years with thousands of self-selected multicultural participants, HCI has experientially explored how to reliably and rapidly cultivate a commonly sensed heartfelt conscious intelligence through Empathy Accelerator Initiatives (EAI).



NOTE:

All underlined words link the reader to research that is fundamental to the success of this proposal.

This experiential process is validated by objective research to ensure accelerated consensus decision making. It has been measured to cohere EEG readings between, among, and within the right and left brains of twelve participants on real-time group bio-feedback equipment, cited by Erwin Laszlo, "The Whispering Pond" p. 109, Element (1996)

GLOBAL AWAKENING CHALLENGE

Igniting Worldwide Collaboration by Inspiring Collective Intelligence

The Human Connection Institute will assist in resolving one of the greatest threats facing humanity today. Empirical scientific demonstrations and undeniable experiences promise to successfully popularize our own commonsense through the co-realization of an interconnecting, all-loving, wholly embodied intelligence.

This global collaboration will attract innovators and teams--everywhere on the planet--to propose creative solutions that will inspire the collective intelligence of humanity to ignite and actually awaken.

A **Selection Committee** will assign funding based on a review of exceptional achievements and promising proposals.

Chosen teams will begin a four year documented development of their projects sharing their evolution with the whole of humanity through Reality TV broadcasts via social media, to then be re-presented (again) in feature and documentary films.

Historical Perspectives

"Is a Mass Psychosis the
Greatest Threat to Humanity?"

"The Empathic Civilization"

- Jeremy Rifkin, political advisor
and best selling author



EMPATHY ACCELERATOR INITIATIVE:

During this four year program, project leaders and their teams will go through a training process with exceptional scientists and business leaders to ensure their success.

Mentors and consultants will be assigned to each team to guide their development. Teams will meet four times (in person) each year during the program as well as remotely on a more regular basis to plan and develop their projects.

Phase 1: Applicants will participate in a six month review process to demonstrate the potential of their project. Projects can include any level of creative initiative that effectively unites the body, heart, and mind of humanity.

Phase 2: Chosen teams will be funded to begin a four year Empathy Accelerator Program. Participants will be paired with mentors and guided to develop their project's vision and strategy. They will be financed based on the size of their team and the scale of their projected needs.

Phases 3&4: During this time extensive documentation will be gathered. Teams, project leaders, and mentors will appear on talk shows, news interviews, ongoing Reality TV podcasts, and print media treatments. Funds will (also) be allocated to video and media teams to evoke the heart of these compelling co-creative activities.

Phase 5: While completing their projects, participants will be financed to further the impact of their work by ensuring these projects continue to evolve and grow sustainably.

CONSCIOUS RECREATION



Powerful
stories
featuring
change
makers
around
the world

DOCUMENTARY SERIES:

Six chosen teams will be assigned video production crews to document their journey from start to finish. Documentary producers and directors will develop inspiring videos that tell the full story of all these projects including the impact of their initiatives.

Their journeys will be broadcast across all social media platforms in the form of **reality TV shows**. The world will follow along as our teams go through the process of ideation, implementation, and realization.

This style of media strategy will demonstrate the dedication of these teams to unite humanity--to enroll as many of us as possible. Regular updates, stories and posts will also strengthen engagement intimately uniting viewing audiences with the ever evolving awareness of each team and their efforts.

Upon completion, a transformative series of feature and documentary films will further anchor viewers through a shared visceral and vicarious experience of an awakening empathic intelligence.

By 'breaking the 4th wall', both teams as well as audiences will reliably enter into an outstanding and unforgettable shared-experience of humanity's true potential--for more than just transformation: for what we may call species-wide enlightenment.

PROJECT TYPES:

- [PEER REVIEWED RESEARCH](#)
- [THE HUMAN CONNECTION PROJECT](#)
- [SOCIAL ENGINEERING INITIATIVES](#)
- [DOCUMENTARY AND FEATURE FILMS](#)
- [INVENTIONS](#)
- [SOCIAL MOVEMENTS](#)
- [MEDIA CAMPAIGNS](#)
- [AWARENESS EDUCATION](#)
- [CREATIVE MEDIA](#)
- [WORLD TOUR EVENTS](#)
- [CROSS CULTURAL SOCIAL EXPERIMENTS](#)
- [EVENTS AND CONCERTS](#)
- [COLLABORATIVE ART](#)
- [GLOBAL DIGITAL COOPERATIVES](#)
- [WORLD MEDITATION EVENTS](#)
- [CONTEMPLATIVE PRACTICES](#)

“Before that moment of time [i.e., the beginning of spacetime], all science has to rely on is unfounded speculation, or at least that was the situation before Riemannian geometry was modified by incorporating point-elements when Andrews developed his intuitive notion of a 0-D point Void. Everything in our scientific model of reality changes by adopting the 0-D point Void as the original Riemannian point-element from which our more advanced Riemannian space-time structure of physical reality evolved.”

- James E. Beichler, PhD.

Sperry Andrews shares a six year theoretical physics partnership with James E. Beichler, PhD to co-creatively explore their insights about a dimensionless mechanism within human consciousness. Their upcoming research conferences could help mitigate the extreme dangers of non-conscious A.I.

Mathematically Modeling Artificial Sentient Consciousness

J.E.Beichler, PhD (2016) “The Emergence of Neurocosmology: Realizing the true nature of the 0-D point/ twist in both the evolution of consciousness and physics” Vigier 10 Symposium.

James E. Beichler, PhD (2017) “In the Beginning: Evolution physics, consciousness, and our physical reality” Wise Journal, Spring 2017

Sperry Andrews (2018) “Resolving the Three Great Mysteries: Consciousness, free will, and God” ASCSI Proceedings. “Aspects of Consciousness”, Raleigh, NC, October. 2018

STRATEGIC PARTNERS

"I have known and worked with Sperry for several years. He has an amazing skill of bringing groups of strangers into an effortless rapport in a very brief period of time.

The depth of connection and spontaneous harmony that this process evokes with ease and rapidity, is remarkable.

On numerous occasions I have observed large groups of people come into rapid consensus and resolve formerly "unsolvable" interpersonal problems.

As a business owner myself, I recommend Sperry's work as a simple, skillful method of getting teams on the same page and headed in the same direction."

-- John Lumiere-Wins, Masters in Marriage and Family Therapy, MFTintern, Brainwave Optimization Technologist, Somatic Experiencing Practitioner, Certified Hypnotherapist



Dr. Miller and Dr. Klisanin have already agreed.

And, if our proposal is adequately funded, other past collaborators will be asked to participate.

Bruce Lipton, PhD is a recognized leader in the field of epigenetic research and education. He is an internationally recognized speaker and author--bridging science and spirit--bringing his cutting-edge presentation(s) to our creative teamwork as well as our overall project.

Richard Miller, PhD is founder/director of the I-Rest Institute. He has trained and now coordinates over four thousand therapists worldwide. He has offered to guide the training of coaches, ensuring our film teams share a 'commonly sensed observer' during production--while also serving as a consultant on this project.

Dana Klisanin, PhD is the founder and CEO of Evolutionary Guidance Media in New York City. named in Forbes, as one of fifty most influential female futurists, she explores how we can use information technologies and new media to promote human wellbeing and planetary flourishing. She is a pioneer in 'digital altruism' and inventor of the Cyberhero.

Jody Raida is a producer and writer, for film and television. she will oversee the film component.

Lynne Joy McFarland has offered to bring together top leaders for the films and live events. To date, she has committed over thirty top leaders to the project.

Craig Hamilton, as an editor, publisher, researcher, and teacher of 'unity consciousness'. He has previously offered to collaborate with us to integrate all aspects of a Buckminster Fuller Challenge.

**Served as Advisory Board of
The Human Connection Project**

Larry Dossey, MD

Stanley Krippner, PhD

David Lorimer, P.G.C.E.

Dean Radin, PhD

Amit Goswami, PhD

Rupert Sheldrake, PhD

Peter Russell, D.C.S.

Beverly Rubik, PhD

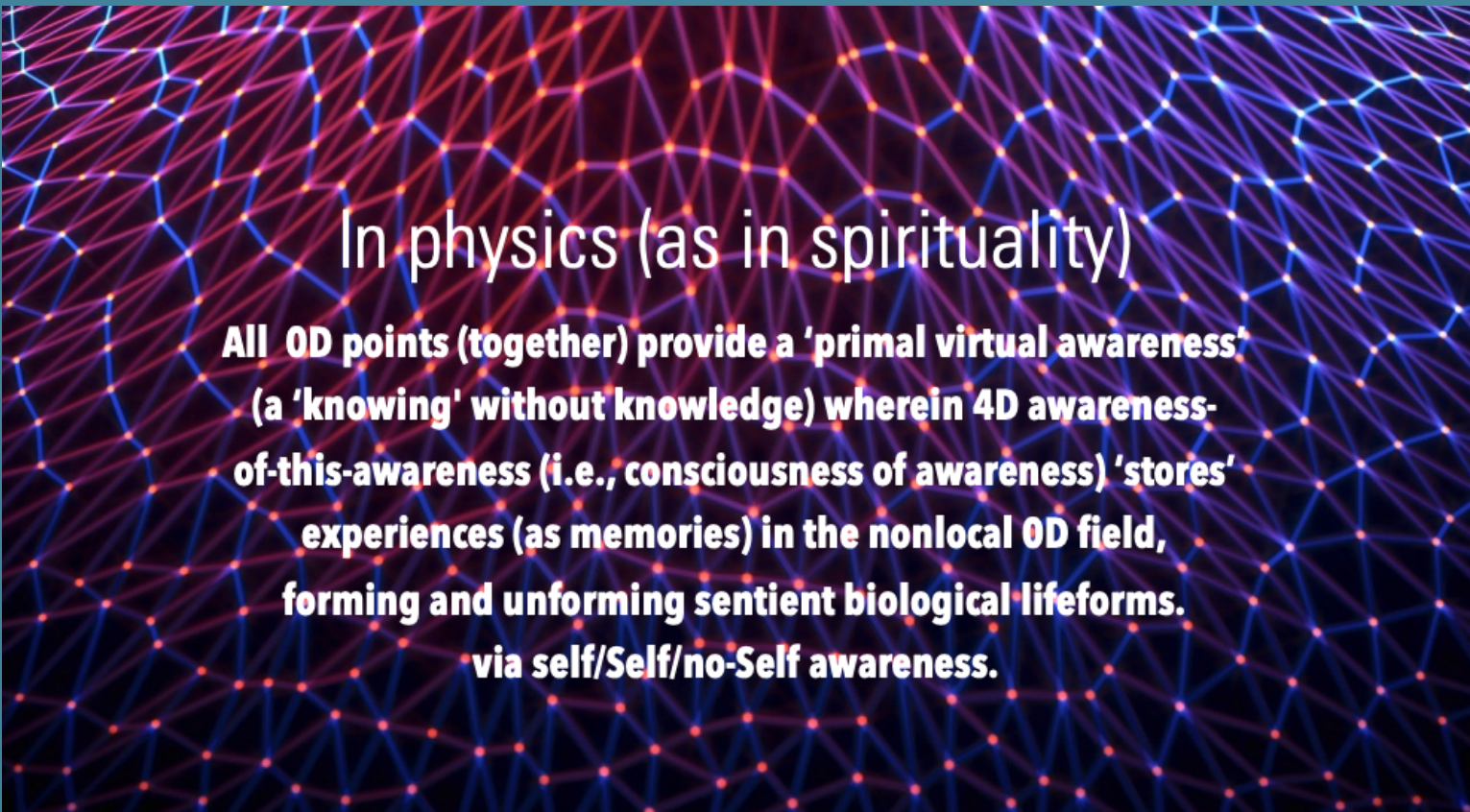


FUND RAISING GOALS

EMPOWERING THE CONSCIOUSNESS OF HUMANITY

As an advisor to a philanthropist, this program may soon be granted a billion dollar budget. This initiative will be financially sustainable to thrive beyond our proposed five year timeline.

Global EMPATHY Initiative	
YEAR 1: IDEATION AND CREATION (2022) In this first phase, we finalize agreements with funding sources, complete marketing and branding, establish our board of directors, agree on the creation of feature and documentary films, social media, video games, social VR, publications, RealityTV, and conferences: receive, process, and choose six teams and documentary crews.	\$300,000
YEAR 2: ACCELERATOR PROGRAM (2023) Six projects receive +/- \$100K for year one of R&D and planning. Leaders and their teams participate in a \$300K mentorship program with top tier mentors. Participation is documented by film crews, \$100K each.	\$1,500,000
YEAR 3: IMPLEMENTING PROJECTS (2024) Six projects receive +/- \$1M to implement their initiatives. Extensive data is collected and participation documented. Six Reality TV teams receive +/- \$300K to support efforts in content creation and collaboration.	\$7,800,000
YEAR 4: MUTUAL REINFORCEMENT (2025) Repeat year 3 funding structure in year 4. Cross pollination, collaboration, and public opinion drives each team to higher levels of excellence, as Reality TV follows all six projects on social media, talk shows, print media, and scientific HCP conferences.	\$7,800,000
YEAR 5: EMPATHIC IMPACT (2026) As each project and product is completed, we focus on ensuring its long term growth. Demographic research assists producers and directors to further refine their films and social media products to ignite our innate capacity for sharing a commonly-sensed, spiritually uplifting, empathic experience that unites multi-cultural viewing audiences.	\$9,800,000
TOTAL BUDGET	\$27,000,000



In physics (as in spirituality)

All 0D points (together) provide a 'primal virtual awareness' (a 'knowing' without knowledge) wherein 4D awareness-of-this-awareness (i.e., consciousness of awareness) 'stores' experiences (as memories) in the nonlocal 0D field, forming and unforming sentient biological lifeforms. via self/Self/no-Self awareness.

Comparing and Contrasting Our Initiative:

Maharishi University

has empirically demonstrated the efficacy of Transcendental Meditation to decrease 'negativity' while heightening 'positive' social indices, to the satisfaction of both impartial professional scientists and law enforcement officers. Offers to collaborate over more than twenty years have so far been disregarded. By contrast, we free participants from dependency on a costly proprietary technique serving both followers and non-followers of their eastern guru.

The Global Coherence Initiative

is a science-based program designed to unite millions of people in heart-focused care and intention--to shift global consciousness from instability and discord to balance, cooperation and enduring peace. Their research, training and technologies are aimed at guiding all of humanity toward realization of its full potential--to rely on the qualities of the heart in its role as caretaker of future generations and our planet. Their core team at HeartMath Institute agreed to collaborate--if there is funding.

SPERRY ANDREWS

"Sperry created an experience of 'group consciousness' where the barriers between us melted, and we came into a co-creative flow.

In this space, we were completely free from inhibition, doubt, judgment, or fear. We had access to much higher levels of understanding, compassion, wisdom, and trust. It seems that this kind of experience would prevent much of the miscommunication, misunderstandings and conflicts that often arise in a work environment. There was also a sense of super-charged creative energy and infinite potential – it felt like we could accomplish anything. This creative state has helped me to be far more effective. I now experience that my work seems to be created through me effortlessly, saving hours of productivity. The state that occurred in the group setting provided a foundation for harnessing the full intelligence and wisdom of a team. It evoked a kind of creativity and innovation that is far beyond what we normally experience."

- Stanford University Graduate and Women's Leadership Coach



PURE & TOTAL AWAKENESS

SONG OF THE VAJRA FROM THE UNION
OF THE SOLAR AND THE LUNAR TANTRA

**“Unborn, Yet Continuing Without Interruption,
Neither Coming Nor Going, Omnipresent, Supreme
Dharma, Immutable Space, Beyond Definition,
Spontaneously Self -Liberating. Perfectly Unobstructed
State, Existing from the Very Beginning, Self-Created,
Without Location, With Nothing Negative To Reject,
and Nothing Positive To Accept. Infinite Expanse,
Penetrating Everywhere, Immense and Limitless ,
Boundless, With Nothing Even to Dissolve or Be
Liberated From. Present Beyond Space and Time,
Existing from the Very Beginning, Immense Dimension
of Inner Space, Radiant Clarity like the Sun and Moon,
Self-Perfected, Indestructible as a Vajra, Stable as a
Mountain, Pure as a Lotus, Strong as a Lion,
Incomparable Bliss Beyond All Limits, Illumination,
Equanimity, Peak of the Dharma, Light of the
Universe, Perfect Since the Very Beginning.”**

– Translated by: Namkai Norbu and John Shane –

For more information:

Contact: Sperry Andrews

sperry@connectioninstitute.org

(505)629-0700